



B2B SOFTWARE

TECHNOLOGIES LTD

PEOPLE . VALUES . TECHNOLOGIES



**NURTURE YOUR BUSINESS PROCESSES
WITH**

B2B  LIFT[®]

LIFESCIENCES INFO @ FINGER TIPS !

Microsoft[®]
GOLD CERTIFIED

Partner

A challenge for life science leaders

- ? Predict future performance, withstanding global challenges.
- ? Trigger scientific bottom line improvements.
- ? Keep the information flow in the enterprise open, transparent and accountable.
 - ? See relevant measures are adapted to sustain growth & profit.
 - ? Ensure a common understanding to fulfil goals.
 - ? Commit to positive outcomes.
 - ? Aligning IT strategy with the Business strategy.
 - ? Cascading IT strategy and goals down into the enterprise

Your Trusted ERP Partner



The Challenge for your IT

- ? Does your IT meet all your **Core Business Needs**
- ? Does your IT help you to reduce the hassle of **Paper Work**
- ? Does your IT let you run your business **The Way You Want**
- ? Does your IT help you **Sharpen Your Competitive Edge**
- ? Does your IT give you a powerful way to **Satisfy Customers**
- ? Does your IT support you making **Smart Business Decisions** without wasting time
- ? Does your IT deliver the functionalities, that you need to **Run Your Business Successfully**

Your Trusted ERP Partner

About B2B Technologies




- ☆ B2B Software Technologies Ltd is a multinational Software Product Company headquartered in India.
- ☆ B2B is a Microsoft Gold Certified Partner, that implements Microsoft's ERP solutions worldwide.
- ☆ B2B is Listed on the Mumbai Stock Exchange, with a focus on the global health care and life science industries.


**B2B has won the coveted
Microsoft award for
Best Regional Partner
of the year - South2 - FY'07**



What We Offer

B2B  LIFT® a solution designed to meet the specific needs of the following Life Science industries...


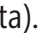
- ☆ Bulk Drugs & API's
- ☆ Formulations
- ☆ Biotechnology
- ☆ Ayurvedic Medicines
- ☆ Food Industries
- ☆ Herbal Medicines
- ☆ Pharmaceutical Machinery Manufacturers
- ☆ Medical Devices
- ☆ Medical Diagnostics

B2B  LIFT® ensure compliance with the stringent and exacting regulatory norms of its clients , whether WHO GMP, USFDA or cGMP.

Your Trusted ERP Partner

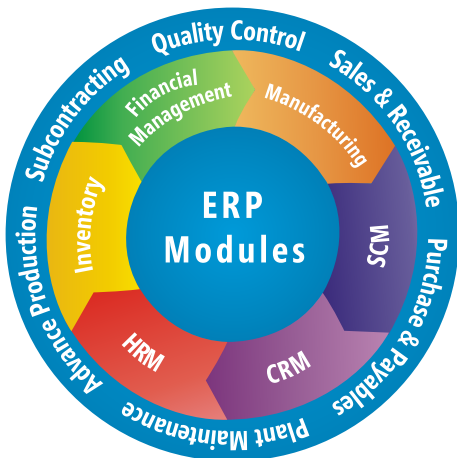
Confronting the challenge


B2B LIFT® and Microsoft Dynamics NAV & AX


Developed by B2B Software Technologies, **B2B  LIFT®** is a comprehensive life sciences software product built on the Microsoft Dynamics NAV and AX platform (formerly known as Navision and Axapta). **B2B  LIFT®** is a solution that is specific to life science Industries, seeking optimum efficiency in their business processes.



B2B LIFT® aligns your organization



B2B  LIFT® aligns your business processes by integrating the various modules there by weaving the organization as a well-knit fabric.

B2B  LIFT® enables you to focus on your core business leaving the regulatory compliance to be taken care of.

B2B  LIFT® saves the company by offering a seam less flow of information and helps faster decision making.

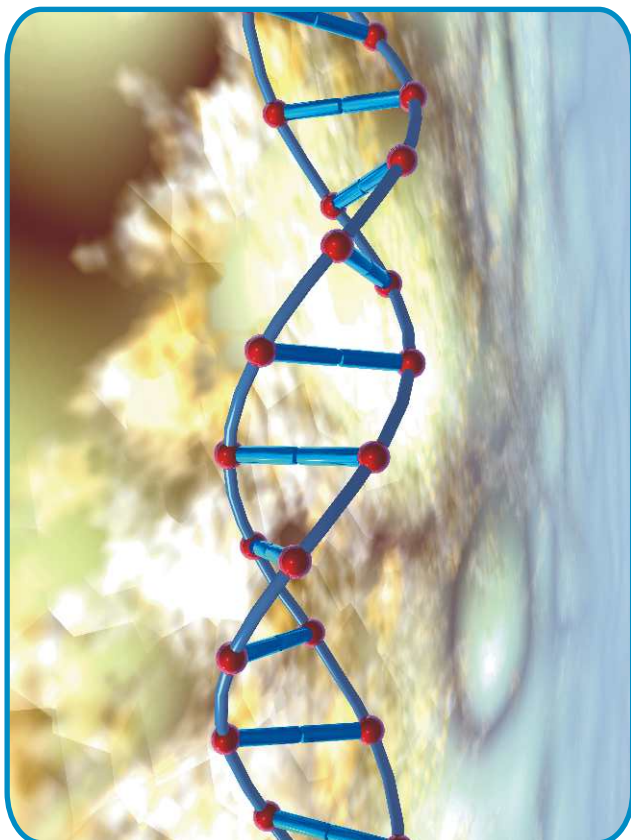
Advantages of the B2B LIFT® Package

- ☆ Highly user friendly GUI
- ☆ Zero Down time/planned down time
- ☆ On-line communication for Suppliers, Customers, and Employees
- ☆ Standardized solution for Business Processes
- ☆ Verticalized solution for complete pharma needs
- ☆ Integration of all functions ensured
- ☆ Faster Return on Investment
- ☆ Easy enterprise-wide information sharing

Your Trusted ERP Partner

How B2B LIFT® empowers you to face the challenge

B2B integrates the processes of your business by focusing on the following areas:



Inventory

Classify materials as APIs, Excipients, Packing, Finished Goods etc.,

- ☆ Issue material on FIFO / FEFO basis.
- ☆ Automatic Batch Number assignment based on the issue method selected.
- ☆ Tracks on-hand availability of stock, thereby ensuring that inventory available is exclusive of the quantities under inspection or those that have been rejected.
- ☆ Define Specifications for Quality Control purposes.
- ☆ Enables easy tractability.

Shelf Life Management

- ☆ Issues material to the production line by considering the expiry date of raw material in comparison with finished product shelf life.
- ☆ Provides definition of shelf life for finished products and raw materials.
- ☆ Defines shelf life of the product based on the parallel product information, or of the R&D done on the product.
- ☆ Automatically calculates expiry dates based on the manufacturing date, thereby providing a tight control on shelf life of the final product.

Your Trusted ERP Partner

Assay Calculations

- ☆ Automatically calculates assay based on Loss on Drying (LOD) and purification.
- ☆ Integration of QC with inventory for assay calculations.
- ☆ Material issue of API to production based on assay calculations.
- ☆ Complete automation for batch determination and assay calculation.
- ☆ Flexibility to override/ update manually the batches suggested by the system.

Production

- ☆ Differentiates between raw material and packing material.
- ☆ Determines average weight of the product based on the quantity defined in MFR.
- ☆ Define multiple Bill of Materials for different batch sizes.

Yield Calculation

- ☆ Calculation stage-wise yield at different processes of manufacturing.
- ☆ Prepares deviation reports based on the yield.
- ☆ Declares final yield reconciliation and output.

Control Sample

- ☆ Determines Control sample for each batch-size at MFR level.
- ☆ Transfers Finished Goods (FG) to FG stores and deducts control sample quantity from the total batch quantity.
- ☆ Completely tracks control sample Inventory.
- ☆ Fix destruction period for Control Sample.
- ☆ Carry out destruction process of control sample based on the destruction period.
- ☆ Defines Storage, QC testing and destruction process according to QA guidelines.



Your Trusted ERP Partner

Certificate of Analysis

- ☆ Defines the Certificate of Analysis based on the tests performed on the material / product.
- ☆ Allows for the attachment of Certificate of Analysis as provided by the vendor.
- ☆ Ensures that the Certificate of Analysis provides for product name, label claim, Batch No, manufacturing date, expiry date, and the inspection parameters.

Standard Operating Procedures

- ☆ Provide details of the scope and responsibilities of the SOP's according to the specific needs of each Life science company.
- ☆ Enables multiple versions of SOP in the system and helps following strict policy with reference to the change control.



Free Sample Treatment


- ☆ Provides registration of free samples received for analysis from vendors/ prospective vendors.
- ☆ Generates labels for the free samples.
- ☆ Converts the suppliers of free samples to vendors category.
- ☆ Destroy the excess / rejected samples.

Loan Licensing

- ☆ Registers Loan license orders.
- ☆ Annotates order entries with batch sizes and delivery dates.
- ☆ Register material receipts against loan licensing.
- ☆ Independently tracks the loan licensing inventory without affecting the company's inventory.
- ☆ Ensures control over the material issued to the production.
- ☆ Creates firm planned production orders. Plan, schedule, produce and dispatch the finished product for Loan Licensing Orders.
- ☆ Complete Quality Control on Loan Licensing materials.

Label generation

- ☆ Automatically generates labels with batch information on the receipts of materials.
- ☆ Generates labels such as "under inspection/sample/accepted, and rejected".
- ☆ Automatically modifies labels as per the status of the samples.

B2B  LIFT® is an integrated, holistic business management ERP solution for life sciences a product guaranteed by the Microsoft logo.



Your Trusted ERP Partner

Microsoft
GOLD CERTIFIED
Partner



B2B SOFTWARE
TECHNOLOGIES LTD
PEOPLE . VALUES . TECHNOLOGIES

B2B Software Technologies Ltd.

6-3-906/A/2, Somajiguda,
Hyderabad - 500 082,
Andhra Pradesh, India
Tel: +91 402337 2522/2337 5926
Fax: +91 402332 2385
Email: info@b2bsoftech.com
Website: www.b2bsoftech.com



Microsoft Dynamics™

www.microsoft.com/india/dynamics

Microsoft Dynamics™ is a line of integrated, adaptable business management solutions that enables you and your people to make business decisions with greater confidence. Microsoft Dynamics works like and with familiar Microsoft software, automating and streamlining financial, customer relationship and supply chain processes in a way that helps you drive business

COPYRIGHT NOTICE

MICROSOFT MAKES NO WARRANTIES, EXPRESS, IMPLIED, OR STATUTORY, AS TO THE INFORMATION IN THIS DOCUMENT.
© 2006 Microsoft Corporation. All rights reserved. Microsoft, the Microsoft Dynamics Logo, Microsoft, BizTalk, Navision, Outlook, PowerPoint, and Windows, are either registered trademarks or trademarks of Microsoft Corporation or Microsoft Business Solutions ApS in the United States and/or other countries. Microsoft Business Solutions ApS is a subsidiary of Microsoft Corporation.